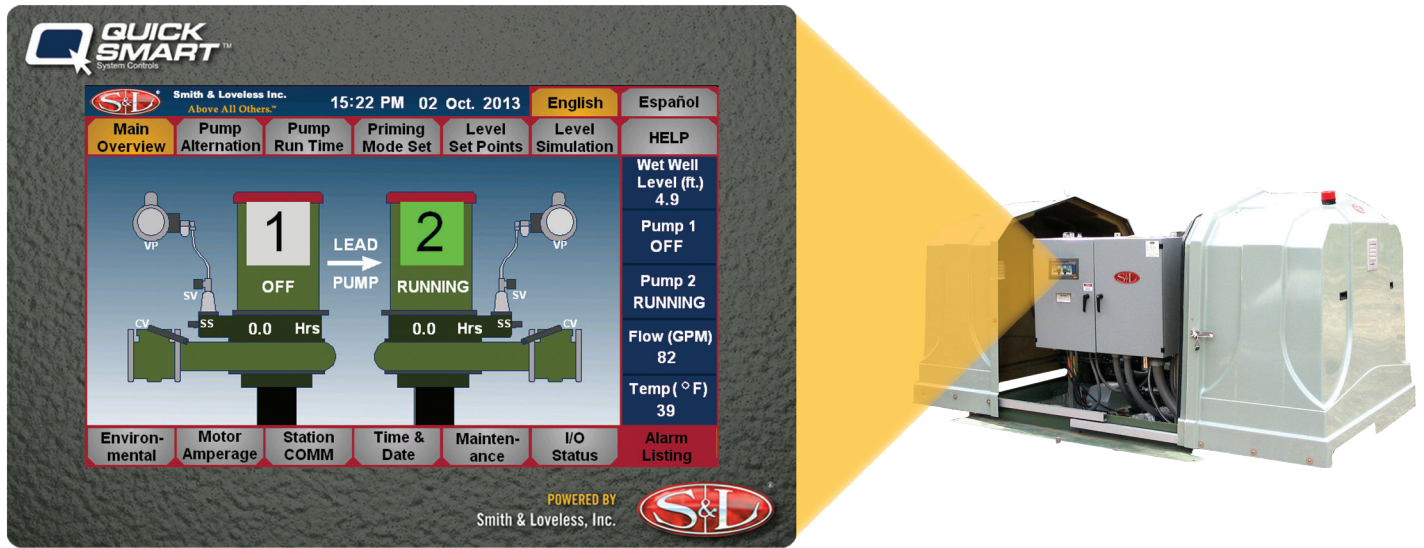


State-of-the-Art S&L Touchscreen Pump Station Controls



- Improved Graphics
- Increased Functionality
- Improved Navigation

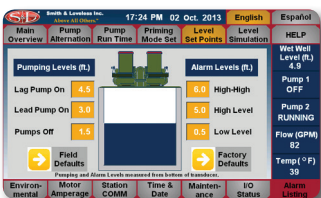
Delivering simplified operation yet powerful pump station control, QUICKSMART™ Station Controls provide unparalleled ability to monitor and adjust all of your pump station functions. A new layout makes control modifications, screen navigation and viewing of pump station status easier than ever, with screen function buttons and a status bar accessible from each screen. Added features take station controller functionality to new levels. Like a new maintenance log feature, which displays periodic recommended operation / maintenance instructions and makes lubrication suggestions based on actual pump run times. Or improved help/troubleshooting support and a new I/O Status screen that displays controller digital and analog I/O status.

Main Features

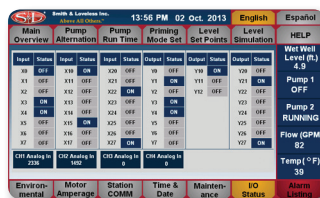
- PLC Station Control
- Alarm Management
- Wet Well Level Simulation
- Prime Mode Selection
- Help / Troubleshooting Info
- Graphical Pump Notifications
- English / Spanish Languages

Sample Screenshots

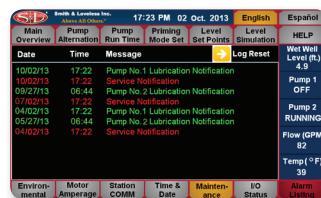
Level Set Points



I/O Status Overview



Maintenance Log



Spanish Language Mode





QUICKSMART™ Details

- 7" (17.7cm) 65K-Color TFT LCD Touch Screen HMI
- PLC/Microprocessor-Based Controller
- NEMA 4 Rated when Installed in Enclosure
- UL Listed or Recognized
- Protected by Surge Protective Device (SPD)
- 5-Year Pro-Rated Warranty Protection

Standard Features

- Graphical Pump Running Indication
- Lead Pump Indication
- General Alarm Indication
- Individual Alarm Messages for Each Alarm Function (w/ Time and Date)
- Alarm Logging, Coded for "Time" active or "Return Time" time cleared - Last 500 Events
- Alarm Silencing
- Digital Indication of Air Temperature
- Digital and Graphical Indication of Wet Well Level
- Graphical Indication of Prime or Pump Failure
- Digital Indication of Elapsed Run Time for Each Pump
- Digital Indication of Elapsed Run Time for Parallel Pump Operation
- Digital Indication of Level Control and Alarm Settings
- Date & Time Indication, with Set Time Functionality
- Heater/Blower Running Indication
- "Help" Screens
- Wet Well Level Simulation
- Prime Mode Selection (**CONSTANT PRIME™** / On-Demand Prime)

Optional Features

- Pump Overload Trip Alarm
- Power Failure
- Simultaneous Start Time Delay
- Phase Monitor (Incoming Power)
- Digital Flow Rate Indication
- Station Intrusion Alarm
- High-High, Low and Low-Low Level Alarms
- **STATIONCOMM™** Remote Text Communication
- Vacuum Release
- Motor Amperage Display

Function Controls

- Pump On / Off Levels
- Alarms (Display / Acknowledgement)
- Wet Well Level Simulator
- Environmental System Set Points
- Pump Run Time Meters
- Two Priming System Modes
- Maintenance Reminders
- I/O Status for the Controller's Digital and Analog Inputs and Outputs
- Maintenance Log (Service Required, and Individual Pump Notification Messages)
- Reset Function:
 - Running Time Meters
 - Alarms
- Set Points:
 - Wet Well Levels (Factory Default and Field Specific)
 - Alarm Levels
 - Heater Operation
 - Vent Fan Operation
- Alternation Modes:
 - Sequenced or Timed Pump Alternation
 - User-Defined Time Intervals
 - Lead Pump / Lag Pump Designation

