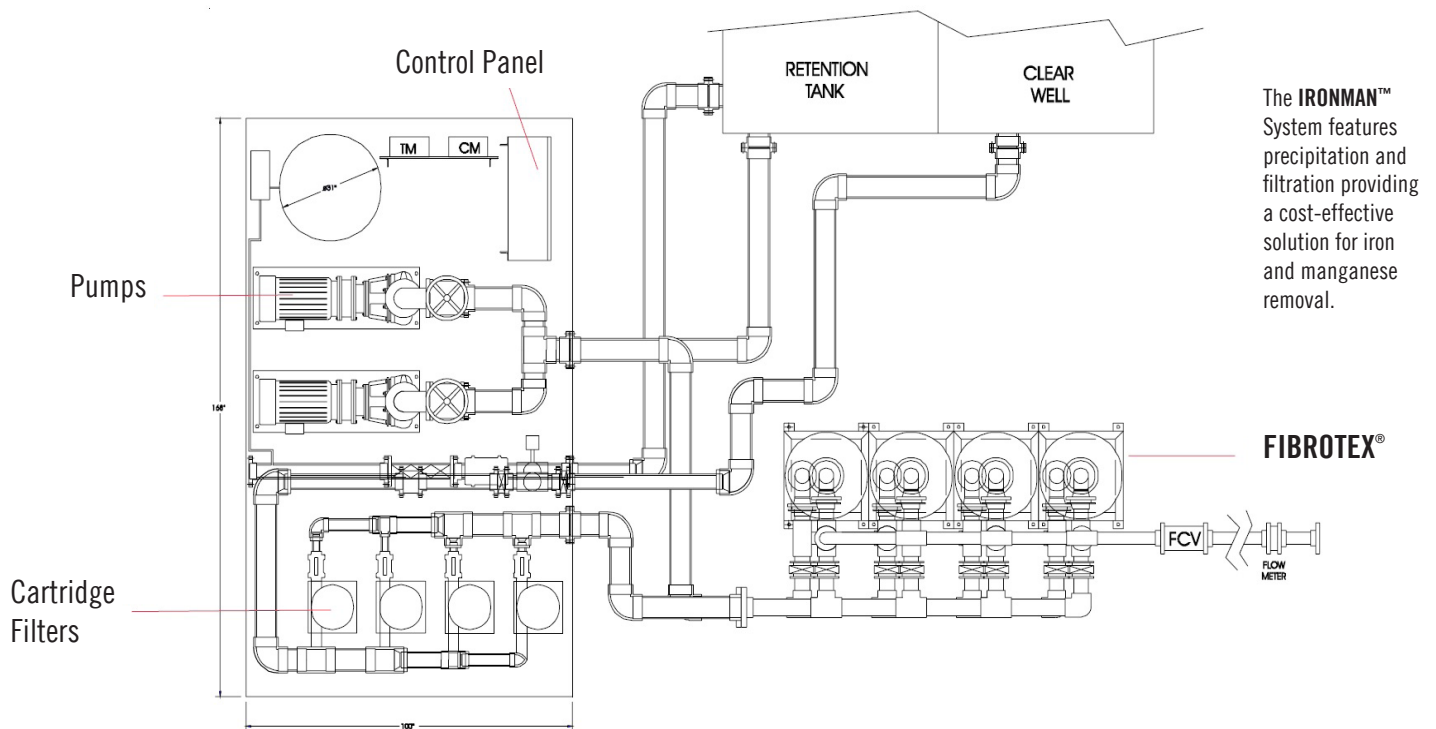


## Iron and Manganese Removal with the IRONMAN™ System Keeps Well Water Flowing in Small Communities

The **IRONMAN™** System -- a uniquely design iron and manganese removal system that combines the **FIBROTEX®** with an integrated oxidation system -- is particularly useful for municipalities that rely on well water sources for potable water. The **FIBROTEX®** is a unique fully automated backwashable depth filter that is ideal for treating ground water under the direct influence of surface water. It economically precipitates and removes iron and manganese from well water and provides a protective filtration that removes surface water contamination.



The **IRONMAN™** System features precipitation and filtration providing a cost-effective solution for iron and manganese removal.

### Benefits

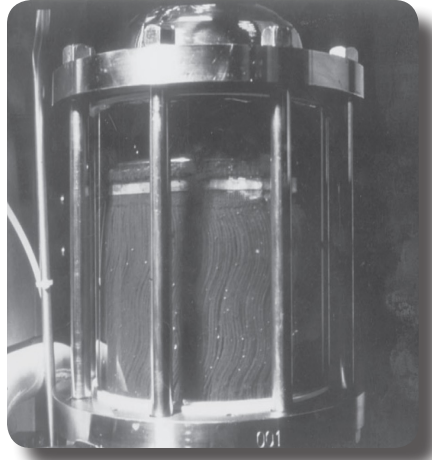
- Keep homeowners happy by removing iron and manganese, which reduces discoloration - black specks and rust - on freshly laundered clothing.
- Provides cryptosporidium barrier of 2 log.
- Meet the IESWTR rules the cost-effective way with an **IRONMAN™** system that utilizes the **FIBROTEX®** for small-to-medium-sized towns and cities.
- Reduction of iron and manganese to EPA specifications.
- Standard systems available from 125 gpm (7.9 lps) to 1,000 gpm (63.2 lps) to fit every individual need.
- Know that the **FIBROTEX®** is tested and certified to ANSI/NSF International Standard 61. All system components also meet the 61 standards.

## Iron and Manganese Removal: Three-Step Process

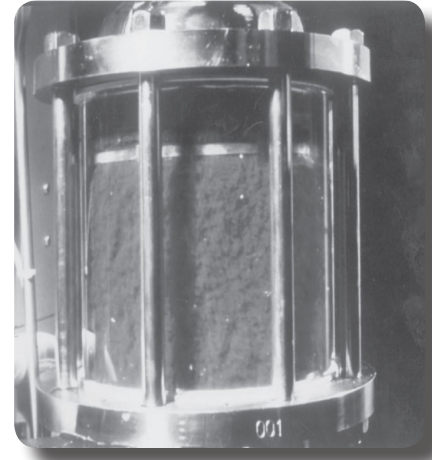
In these photos, the unit features a special Plexiglass housing to demonstrate how well iron oxide is removed.



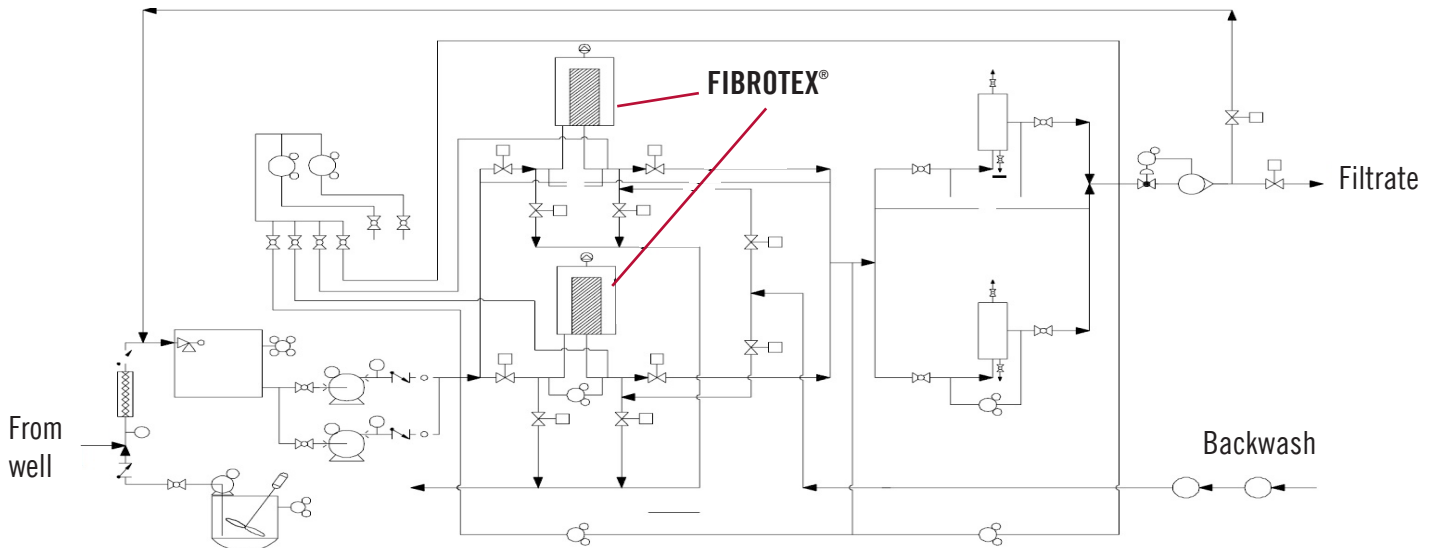
During the filtration mode, the incoming iron and manganese particles are captured by the filter media (as shown above). The filter media is comprised of synthetic fibers that are compressed and twisted into a high density matrix during the filtration cycle. The fibers capture iron and manganese particles in the feedstream through high efficiency depth filtration.



Once the resilient filter element is loaded with solids, the **FIBROTEX**® then backwashes by untwisting and stretching (beginning of stretch shown above). The filter is automatically cleaned by an outward-flowing stream of previously filtered water.



The iron and manganese particles loosen and detach (as shown above) during the backwash mode. The backwash removes the iron and manganese particles into the backwash water. Once the automatic backwash is complete, the resilient filter is again compressed and twisted into the filtration mode.



The **IRONMAN**™ System combines operational efficiency with high performance. The **IRONMAN**™ System provides a continuous flow of treated water without the need for ancillary equipment. The **IRONMAN**™ System packed with **FIBROTEX**® provides a biological barrier for the removal of waterborne pathogens with removal efficiencies >2 log for cryptosporidium oocysts.